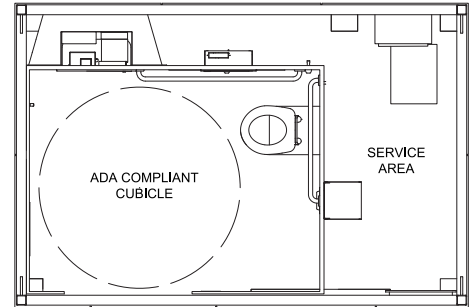




JUPITER

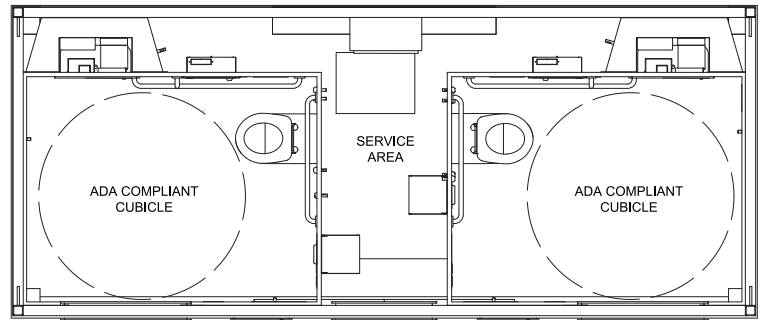
: JUPITER SINGLE

WIDTH: 11' 3"
DEPTH: 7' 7"



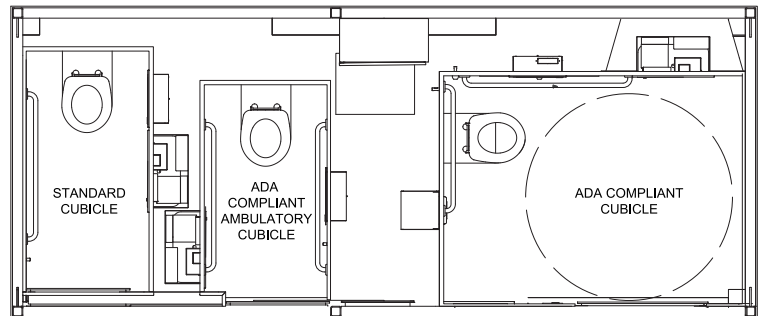
: JUPITER TWIN

WIDTH: 18' 1"
DEPTH: 7' 7"



: JUPITER TRIPLE

WIDTH: 18' 1"
DEPTH: 7' 7"



Exeloo US 1800 676 5290

INTELLIGENT PUBLIC RESTROOM SYSTEMS

www.exeloo.com

Auckland, New Zealand | Sydney, Australia | Melbourne, Australia | San Luis Obispo, USA

POPULAR ROOFS

Skillion

A high density insulated panel roofing system for strength and insulation.



Gabled

This traditional design will blend seamlessly with like buildings and historical park surroundings.



Living Roof

The environmental choice. Supplied with drainage platform and planting materials.



POPULAR EXTERIORS

Compressed fibre Cement (CFC)

A versatile and resilient exterior cladding system with a graffiti resistant satin gloss painted finish or artist mural.



FutureWood Battens

An eco-friendly cladding system that has low moisture absorption and offers extremely low maintenance.



Photo Film Overlay

A fully flexible, graffiti resistant over laminate that can transform the mundane into spectacular.



POPULAR DOORS

Swing Doors

Available in Powder Coated Aluminum or Stainless Steel.



Manual Sliding Doors

Heavy Duty Stainless Steel construction ideal for high wind zones or transit installations.



Automated Sliding Doors

Heavy Duty Stainless Steel construction for transit installations and improved disability access.

